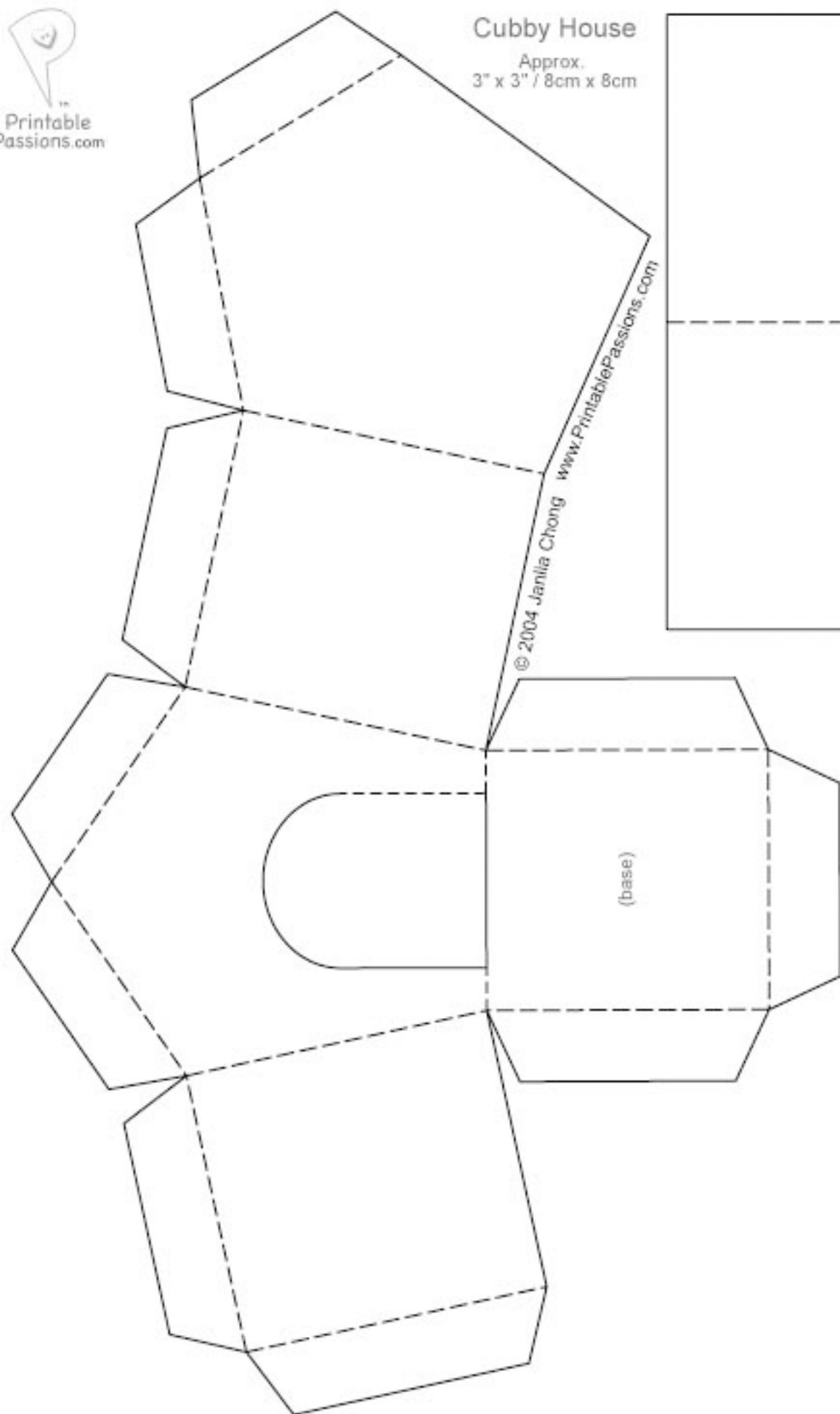




Printable
Passions.com

Cubby House

Approx.
3" x 3" / 8cm x 8cm



© 2004 Janlia Chong www.PrintablePassions.com

(roof)

(base)

1. Print on desired paper.
2. Cut out template. Cut out door (leave one side for hinge if desired).
3. Attach house to base at glue panels.
4. Fold roof at centre and glue to top of house at panels.